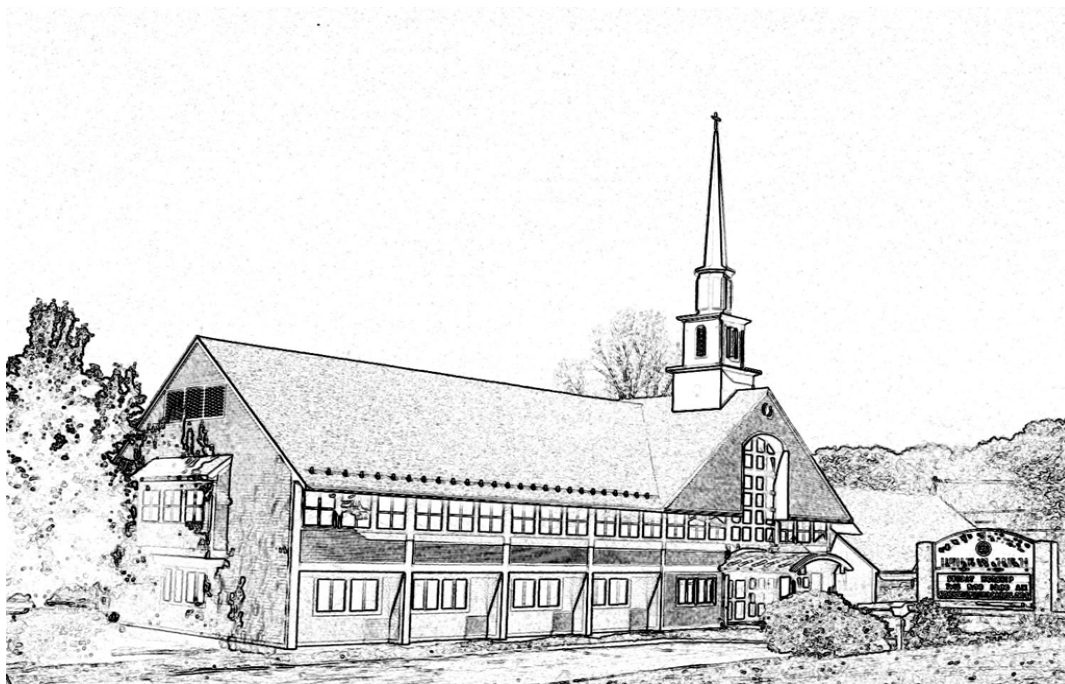


the †GOOD SHEPHERD LUTHERAN CHURCH† MESSENGER

Our Mission:
We are growing, nurturing, making disciples in Christ.



NOVEMBER 2011

O.W.L. Luncheon

Come join us for
“Older, Wiser Lutherans”
potluck luncheon

Date: **Wednesday, November 9, 2011**

Time: **12³⁰**

Location: **Fellowship Hall**

Special guest Kristen McCordick, RN, our Parish Nurse
will be there.

Please bring a dish to share.

Rolls and Beverages to be provided

RSVP to Joan Olson (508) 366-7370 by Sunday, November 7th
to say what you can bring

SNOW ALERTS & CANCELLATIONS In case of snow related closings Good Shepherd will change the outgoing voicemail, send a constant contact email (be sure your email is current) add an announcement on our website www.gs-lc.org as well as list our closings on WBZ 1030AM Radio and on the local television stations, be it for worship services, Mid-Week School or other events.

Fall Congregation Meeting

Sunday, November 20th at
11:45 am after the 3rd service
in the Sanctuary.



Blood Pressure Screening – 2011

Stop by the Parish Nurse office anytime between services (10 & 10³⁰ am) to have your blood pressure checked. Dates for 2011 are as follows:
November 20, December 18

CHRISTMAS POINSETTIA

Sign-up deadline, Sunday, December 4th. A sign-up sheet with details will be in the Narthex starting November 2nd



NEWS FROM PROPERTY

The **Property Committee** fall clean up of the church grounds will take place on Saturday, November 12th from 9:00 am to 1:00 pm. Please join the property committee and the Boy Scouts for this morning of hard work, fun, and fellowship. Please come for great fellowship and hard, but satisfying work as we rake, weed, and tidy the grounds. Bring your favorite rake or garden tool and a good pair of gloves. Contact Tom Decatur at tmdecatur@townisp.com for additional details. The Property Committee is looking for additional people to join the committee.

THANKSGIVING DINNER FOR WESTBOROUGH RESIDENTS

Once again, the Knights of Columbus, in conjunction with several civic organizations and religious communities in Westborough, will be sponsoring a Thanksgiving Day dinner. Reservations must be made by Wednesday, November 16th, at the Senior Center. Home deliveries will be made at noontime on Thanksgiving Day and will only be available for those folks who receive *Meals on Wheels*. The dinner, itself, will begin at 1pm at the Knights of Columbus Hall. There are some openings available for volunteers in a variety of capacities. Sign-up sheets will be forthcoming.

The 2011 Ecumenical Interfaith Thanksgiving Service



The Congregational Church of Westborough
Westborough, MA

This year the Interfaith Thanksgiving service will be held at the Congregational Church of Westborough on **Wednesday, November 23rd at 7³⁰ pm.**

Please wear your name tag each week so that new members & visitors can get to know all of us.



Don't Forget!

Turn your clocks back one hour before you go to bed on **Saturday, November 5th** as Daylight Savings Time ends on Sunday November 6th and you don't want to miss services!!

Wedding Celebrated

Saturday, October 8, 2011
Emily & William 'Tal' Short

Emily is the daughter of Anne & Steve Changaris



REGULAR WORSHIP SCHEDULE

7:45 am Traditional Service
9:00 am Traditional Service w/Choir
10:45 am Contemporary Service

Please consider signing up for **Simply Giving™** so that Good Shepherd can count on your contribution even while you are away. For more information see David McCordick before or after service, or drop him an email at david@mccordick.net. Thank you!

LEARNING @ Good Shepherd wishes for ...

- ★ SPLASH! Cradle Roll Packs - \$20 each
- ★ CD players for Sunday School Classrooms



ARTS @ Good Shepherd wishes for ...

- ★ Wireless vocal microphones
- ★ Wireless Audio Hook-up
- ★ Concert Piano for Church
- ★ New Laptop

TAGS @ Good Shepherd wishes for ...

- ★ Large LCD TV

Office @ Good Shepherd wishes for ...

- ★ Commercial Refrigerator & Dishwasher for kitchen
- ★ Air conditioning for Nave
- ★ Speakers for Fellowship Hall to hook up to sound system and microphones.
- ★ New Industrial Vacuum Cleaner

Parish Nurse @ Good Shepherd wishes for ...

- ★ Mannequins for CPR training
- ★ BP Cuffs

Church Council @ Good Shepherd wishes for ...

- ★ Laptop for Church Treasurer

Altar Guild @ Good Shepherd wishes for ...

- ★ 2 Torches for either side of the pulpit
- ★ Altar Linens
- ★ Paraments - Pentecost and other sets
- ★ Lectern banners
- ★ Seasonal and Special Occasion Banners
- ★ To have the existing Silver Altar Set re-silvered (4 pieces)

DECEMBER MESSENGER DEADLINE

Monday, November 14th

Please email your articles to Caryn Francese in the office at secretary@gs-lc.org.



Dear Partners in Ministry,

A couple weeks ago, on a Wednesday night teaching Confirmation class, we were learning about the second petition of the Lord's Prayer – "Your kingdom come." As a class, we talked about what it means to see God's kingdom take shape in our world. We realized it's not about kings and queens or knights going on long journeys. Rather, it's about seeing how God is present within our daily lives, how God's kingdom comes to us each and every day.

In his Small Catechism, Martin Luther wrote about this petition, "In fact God's kingdom comes on its own without our prayer, but we ask in this prayer that it may also come to us." In other words, we ask for the ears to hear and the eyes to see how God is with us.

Next, we wrote down on small pieces of paper the places we had seen God's kingdom come alive within our lives. Each of us wrote down their story or experience. We collected them in a small basket, and in prayer, offered them back to God.

At Good Shepherd, we seek to make every Sunday a time when someone can come and see and taste God's kingdom. We seek to make every worship service, every Sunday School class, every music rehearsal a place where everyone can experience the presence of the resurrected Christ.

So, I wonder – if you were in that class, what would you write down on that slip of paper? What would you name as the time or place that God's kingdom was made real right before your eyes?

Many of us have come to Good Shepherd because of the ministries that are geared toward children – Sunday school, Midweek Bible class, Confirmation class, Teens at Good Shepherd, children's choirs, etc. Sometimes, that means we forget about ourselves, about our own spiritual needs and desires.

Our culture leads us to do everything for our children so that they might realize their dreams. But God's kingdom, God's presence, is revealed to us as well. So, I wonder again, why do *you* come to Good Shepherd? What moves in *your* heart when you are here?

I pray that you come because you too experience the resurrected Christ in this place, because God's kingdom comes here and strengthens each of us for our journeys.

Holy God, help us to remember ourselves and our relationship with you – what we need and how you might provide. Teach us to listen to our lives and ask "Where are we hungry for your love?" Then give us the courage to seek it out, to fill that hunger and to satisfy our deepest needs with your care. In the name of Jesus, Amen.

See you in church, Pastor Jeff

Baptisms Celebrated – 2011



Luke Patrick Hossler – 1/23/11

Son of Inna & Patrick Hossler

Nicholas Michael Lentz – 5/29/11

Son of Jennifer & Michael Lentz

Declan Alexander Buccì – 6/26/11

Grandson of Yvonne & Dick Topping

Ethan Daniel Proia – 7/17/11

Son of Sharon & Mark Proia

Kennedy Lynn Compton – 8/14/11

Daughter of Jen & Justin Compton

Julie Elizabeth Peterson – 8/14/11

Daughter of Laura & Keith Peterson

Carolina Alexis Lillian Steckley – 9/4/11

Daughter of Britney & Robert Steckley

Benjamin Harold Anderson – 10/2/11

Son of Meggin & Mark Anderson

Ava Marie Bittel – 10/16/11

Daughter of Cindy & Eric Bittel

May God keep them in the joy and blessing of their baptismal covenant.

Dear friends,

I can't believe how fast this year is going by. Here we are readying for another Thanksgiving and Advent season. I would like to communicate to you a few very important events that are coming up related to the business end of Good Shepherd. Your Congregational Council has been working with the various committees and program leaders to put together a realistic FY12 budget. A lot of hard work has been put into gathering, analyzing, and quantifying the recommendations of the various programs of GSLC. A special thanks to Deb Casey, our Treasurer, for the countless hours and her invaluable expertise that she brings to this process.

Communication, transparency and education are high on the list of goals for this year's council. In that spirit, we are inviting any person interested in learning more about the FY12 budget and the process behind the needs that have been requested in creating this budget, to an open "Town Hall style" meeting on Tuesday, November 1st, 2011 7pm to 8:30pm. This is the time to review the first draft of the proposed FY12 budget, gather input from the congregation at large, educate on what it costs to run the various programs at Good Shepherd, and discuss the need and ways to support these programs. Childcare will be provided for this meeting.

Your congregational council has been working on many other things this year. We met in August, offsite, to discuss the current structure of the council and how moving towards a Program style Church is affected by this and what changes might be needed to make this transition successful down the road. We continue to

Church Council

discuss and learn more about Program Style leadership and are working on defining what that might look like for us here at GSLC. We will continue to discuss this as we start the new year in 2012 and report out our findings.

Another item that we have continued to work on is putting into place policies and procedures to use as guidelines for moving about the various ministries at Good Shepherd. We are hopeful to have the final drafts completed in the next few months with hopes to have a final report to the Congregation at the February meeting.

We also look forward to our annual meeting which is scheduled for Sunday, November 20, 2011, in the fellowship hall, immediately following the 3rd service @11:45am. Childcare will be provided for the meeting. A letter will be forwarded to you early in November including the agenda and proposed budget to review prior to the meeting.

Thank you for your continued support and as always, please feel free to contact me if you have any questions or comments. I can be reached either via email at bnahollis@comcast.net or via telephone at 508-460-0664.

Peace. Brenda Calder



.Nurse's Notes

"Be joyful always, pray continually; give thanks in all circumstances, for this is God's will for you in Christ Jesus"

~1 Thessalonians 5:16-18

November is a time to reflect on how thankful we are for all the blessings that God has given us.

One of the things I thank God for every day is the good health that my family and I enjoy. Prevention is certainly a big factor in remaining healthy, so with that in mind, I've included a flu review. The flu (influenza) is spread by coughing, sneezing and unclean hands. The [U.S. Centers for Disease Control and Prevention \(CDC\)](http://www.cdc.gov) encourages everyone to prevent the spread of germs by doing the following:

- Cover your nose and mouth with a tissue when you cough or sneeze.
- If you don't have a tissue, cough or sneeze into your upper sleeve, not your hands.
- Put used tissues in the trash.
- Clean your hands after coughing or sneezing. Wash with soap and water or with alcohol-based hand cleaner.
- Avoid touching your eyes, nose and mouth.
- If you get sick, stay home from work or school, and limit your contact with others to keep from infecting them. People should stay home at least 24 hours

after they are free of fever (100°F), or signs of a fever without the use of fever-reducing medications."

Bottles of hand sanitizer and Purell towelettes are available throughout the church as well as in the parish nurse office. Another good way to reduce your risk of getting the flu is by getting vaccinated. Please talk to your doctor to see if the flu vaccine is right for you and your family. Vaccines can be provided through your doctor, as well as many other locations. If you need assistance or additional information, please don't hesitate to contact me directly via phone 508-836-4306 or email: nurse@gs-lc.org.

The annual Crop Walk for hunger was held on Sunday October 16. Thanks to all of you who walked and/or sponsored someone. A special thank you to Chrisann McCarthy, this year's crop walk coordinator.

The next blood pressure screening will be held on Sunday November 20 from 10am – 10:45am.

Please stop by the parish nurse office if you want to take advantage of this service or if you just want to say hello. If you would like your BP checked on a different Sunday, don't hesitate to ask when you see me. My stethoscope is always at church.

One final note...the blood drive we were scheduled to host on Saturday November 12th has been cancelled (at the request of the Red Cross) due to upgrades of their computer system. We hope to have a blood drive in the spring; keep an eye on this space for further details.

In Christ, Kristen McCordick RN, BSN, Parish Nurse

To go where love leads, to serve where love calls, to give as love moves

Dear Members and Friends.

Thank you very much for presenting your 2012 commitment card on Sunday October 30! If you have not done so, please do so soon. We have additional commitment cards in case you need a new card. What we do matters – greatly!

I can hardly believe that the season of the holidays will soon be upon us, Thanksgiving, Advent and Christmas. While we have made these holidays sometimes even busier than "normal" days, I personally enjoy – when all preparation is done - to slow down and focus on what is most important, friends and family, being thankful for our blessings and sharing with others.

We at times confuse ourselves with the thoughts that "I have worked hard for these blessings", and that is certainly right. But God gave us the talents that we apply in what we do, and therefore everything we have is still given to us be God first, and when we give to Good Shepherd, we give back to God what God has given us first.



The following story may help us to recognize some of the gifts of God. One of my godfathers sent me this beautiful story years ago, all I did was to translate it from German. I am not sure about the actual source. It goes like this:

“I saw a wonderful shop with an illuminated sign: “Shop of God”. I entered and saw an angel behind the counter. *Beaming with excitement I asked: “What do you sell here?”*”

The angel answered: “All the gifts of God”

I asked: “Is it very expensive?”

The angel responded: “No, it is all free!”

I looked at the displays in the shop and saw packages with the hopes of the world, crates full of wisdom, pots filled to the brim with faith, jars overflowing with trust and much more. Trying to hide my excitement I asked him:

“I would like a lot of love, please, and the redemption of my sins, a deep faith and much happiness for me, my family and all mankind.”

The angel smiled and prepared for me a little package, which fit in the palm of my hand.

Surprised I asked: “Is that all?”

Becoming more serious the angel responded:

“Dear brother, in the Shop of God we do not sell the fruits, only the seeds!”

All of us have received these free seeds, free gifts from God – gifts that profoundly determine who we are – talents that we ought to apply for the benefit of our neighbors.

Thank you for your generosity in our 2011 Stewardship Campaign, and I wish you a peaceful and hopefully stress free Thanksgiving!

Jochen Salfeld for the Stewardship Committee

MUSIC MINISTRY NOTES



Many thanks to all who are part of the Music Ministry here at Good Shepherd.

This month, special thanks go to the following people:

↳ To Emily Arnold, flute, and Ethan McRae, oboe, who accompanied the Adult Choir on October 2.

↳ To Michaela Frederico, Abby Kelly-Lanser and Megan Wig, members of the

MidWeek Singers, who sang at the Lutheran Healthcare Center service on Sunday afternoon, October 9. You sang beautifully, and Pastor Bean and the residents loved having you there!

↳ To Marilyn Reiman, who played trumpet, and Deb and Nicole Harvell, who played violin at that same service.

- ↳ To Shawn Gillespie, and Emily and John Arnold, for leading the Sunday School Singers each week, but especially as they sang in church on October 23.
- ↳ To Sarah McRae, director, and the members of Allegro Chimes, for playing the Prelude at the 9:00 service on October 23.
- ↳ To the congregation members who have contributed to purchasing the new octave of chimes for Allegro Chimes. You may not be active in Ringing or Singing, but you are an important support to this ministry!
- ↳ To Alex Albers, for serving as Cantor for our Wednesday evening services, and for leading the Good News Choir. Thanks to Bruce Grams for accompanying them.
- ↳ To Alex Albers, Linda Frederico, and Bruce Grams, for singing in the choir that helped lead the Lutheran Hymn Festival at Trinity Lutheran Church on October 23.
- ↳ To Marilyn Reiman and Bob Frederico, who accompany our hymns so well, but especially for accompanying the choir on Reformation Sunday, October 30.

Welcome!

To new members of the Gospel Ringers: Pat Fontes, Linda Frederico, and Christine Matney. There are still openings in the Gospel Ringers, and we are especially looking for people who would like to ring for Christmas. If you'd like to play, even on a short term basis, we welcome you!

Getting Ready!

We are always anxious to welcome new members of our choirs. Parents, please encourage your children, as we prepare for the Children's Christmas Pageant, to participate in the Good News Choir (grade 1 through Sunday School,) who rehearse on Sundays from 10:10-10:40, or the MidWeek Singers, who rehearse on Wednesday evenings at 6:00. We'd like to include some special music that may not be able to be rehearsed in just the time that is available in Sunday School.

Good Shepherd Kids: Please return the sign up on the sheet in this newsletter if you'd like to sing or play an instrument for the Christmas Pageant, and let me know if you'd like to play on Christmas Eve.

This is important ministry! We're Making Music for the Lord!

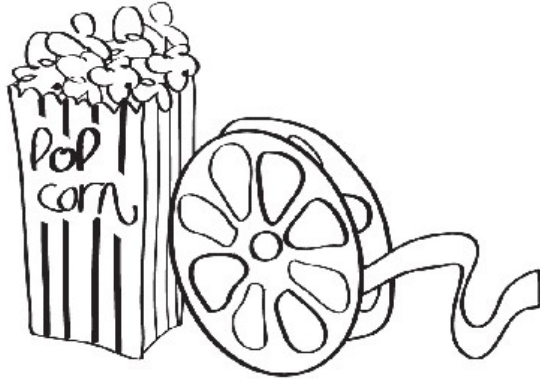
In God's Service, *Bess Sproul*

TAB Everyone is different... and nothing is ever straightforward. Schedules are challenging but consider your schedule challenged! **Take A Breath** will be meeting on Tuesday, the 15th at 7:30. Join other women for fun, fellowship, and Bible study using the Gathering publication, formerly called The Lutheran Woman. We will be meeting at Yvonne Topping's: 24 Independence Lane, Shrewsbury 508-925-5149

Youth Ministry News

Middle School Youth Group (5th-8th graders)

Friday November 3rd 6:30 – 9:00 PM



Meet at church this night for a craft and watching a movie together. All are welcome - hope to see you there!

Are you going to New Orleans?

The TAGS Mission Trip next summer is to the ELCA National Youth Gathering in New Orleans!



This trip is July 16th-22nd, 2012, and all current 9th-12th graders can attend. There will be meetings and fundraisers throughout the year to prepare for the trip. As of now, 12 are signed up to go, and there is room for more! Talk to Pastor Jeff ASAP if you would like to go.

Teens At Good Shepherd



Together Always Growing Spiritually

In November, don't forget our TAGS meeting on Sunday afternoon on Nov. 13th! Keep coming on Sunday mornings for the NOOMA videos and discussion, and be sure to come on 11/27 for our pancake breakfast fundraiser. See you at church!

CALENDAR DATES

Fri. Nov. 3rd – Are you in need of service hours at school? Come help with our middle school youth craft and movie night as part of your community service.

Sun. Nov. 6th – TAGS time on Sunday morning at 10:00–10:45 AM. NOOMA Video #8 “Dust”

Sun. Nov. 13th – TAGS in Church Sunday

TAGS Meeting 4:00–6:00 PM at church, dinner provided. This will include some planning for the youth gathering, but also some time in our Bibles. Everyone is welcome!

Sun. Nov. 20th – TAGS time on Sunday morning at 10:00–10:45 AM. NOOMA Video #9 “Bullhorn”

Sun. Nov. 27th – TAGS Pancake breakfast fundraiser all morning at church. Lots of help is needed!

Plan ahead now for the TAGS Christmas party on Friday Dec. 9th at the Bianchi's, and to help with our next fundraiser, the craft fair sale on Sat. Dec. 10th in the morning!



Super Wednesday

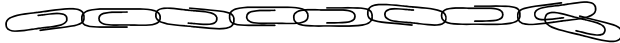
5:30 – 7:00	Supper
6:00 – 6:30	Song – Midweek Singers
6:30 – 7:30	Study– Adult Class
Gr5&6	Old Testament 6:30 – 8:00
Gr7&8	Confirmation 6:30 – 8:00
7:30 – 8:00	Service of Worship

Date	Supper	Adult Class	Worship Service
11/02/2011	Turkey	Lutheran Course – 4	Unfailing Light
11/09/2011	Meatloaf	Lutheran Course – 5	Evening Prayer
11/16/2011	Chinese Buffet	Lutheran Course – 6	Healing
11/23/2011			
<i>Thanksgiving Eve – No Super Wednesday!</i>			
11/30/2011	Smorgesbord	Advent 1	Prayers for Advent
12/7/2011	Italian	Advent 2	Prayers for Advent
12/14/2011	Chili	Advent 3	Prayers for Advent
01/04/2012	Chinese Buffet	Faith Statements 1	Unfailing Light
01/11/2012	Meatloaf	Faith Statements 2	Evening Prayer
01/18/2012	Italian	Faith Statements 3	Healing
01/25/2012	Chicken	Faith Statements 4	Prayers Around the Cross



CHRISTIAN EDUCATION

CHRISTIAN EDUCATION CLIPS



The Messenger deadline for November was October 15th; at that time I was showing progress in dealing with my recent illness. Everything was back to normal except my legs. Physical therapy was beginning to make a difference. I hope to be on the job soon. Thank you for all the cards, prayers and flowers. I love my prayer shawl and the comfort it



has brought. Thank you also to all who have stepped up to cover many of my responsibilities. The Good shepherd family is truly a blessing.

Suzanne Gillam

Director of Christian Education

The Sunday School
Christmas Pageant

THE ADVENT TREE

As part of our Sunday worship at 10:15 am on December 12, 2011



An Advent Tree? What's an Advent Tree?

In our modern world, Christmas trees are in the stores before Halloween. It is hard for children to understand the idea of waiting and watching for Christ to come among us.

In the weeks leading up to the pageant, Sunday School classes will make ornaments to place on the tree, each being a symbol of Advent. As part of the pageant, classes will place their ornaments on the tree.

- † Who will read the Bible passages and explanations of the ornaments?
- † Who will be the actors (some with speaking parts, some not) to portray the nativity story?
- † Who will bring the gift of song to set the tone for the season, help tell the story, and lead the congregation in song?

Performances by the MidWeek Singers, Good News Choir, Sunday School Choir, Allegro Handchimes and our talented youth musicians will be woven into a pageant. Parents are asked to return the pageant sign-up sheet that arrive home in the November Sunday School Newsletter or the one in this Messenger by 11/13 for speaking parts and 11/20 for all other parts.

In addition, this year we would love to include a flute choir in the pageant. Are you interested? If so, please email Bess Sproul at music@gs-lc.org, see Bess at church or add onto the sign-up sheet for the pageant.

Adults as well as children are welcome in this Flute Choir.



SAVE THE DATES !

Advent Wreaths

will be made on Sunday, November 27th in the Fellowship Hall between worship services.

Everyone is invited!

Christmas School

for PreSchoolers & Parents or Grands

will be held on December 7, 8 & 9 at Good Shepherd 9:15 – 10:45 a.m.

There will be music, storytelling, games, crafts, and a snack -- all designed to help our preschoolers understand the Christmas story. Use the form in this Messenger or call the office to register.



BOOK SALE RESULTS

\$208.40 was raised in this year's used book sale for the Campership Fund. Thank you for your donations and your patronage. *See you next year*



EXTRA HALLOWEEN CANDY?



If you're looking for a place to donate leftover Halloween Candy, Midweek School and Confirmation would love to receive any and all donations. **60** children are regularly attending each Wednesday night, and supplies run out quickly! Bags may be left in Mrs. Gillam's office. **Thank You !**

Don't forget to try our . . .



9 & 10:45

Sunday Adult Forums –

Genesis {through November 6th}

I Wonder as I Wander {Starting November 13th}

THANKSGIVING BASKETS



Once again we will be collecting donations for Thanksgiving Baskets to be distributed by Westborough Youth and Family Services for families in need. Children in each Sunday School class will be bringing in specific items. If you'd like to help with a cash donation or Stop and Shop gift cards, November 20th is the deadline. What a wonderful way to reach out to our community.



Thank you to the confirmation students who participated in this year's Crop Walk along with many members of our congregation There were at least 44 people If we missed anyone, we apologize. Thanks to everyone!

Kyle Wanda, Matt Keogh, David DeMattia, Julia DeMattia, Beth Adduci, Nathan Adduci, Julia Ricci, Dara Ricci, Romma Southwick, Mikayla LaFleur, Karen English, Rachel English, Colleen Kasprzak, Andrea Lowy, Annalise Lowy, Timothy McBrayer, Rebecca McBrayer, Brooke Jones, Matthew Petry, Elise Ribaud, George Grasse, Lydia Grasse, Laura Chevalier, Kyra Chevalier, Paula Sulmasy, Lisa Sulmasy, Daley Miller, Kathi Miller, Jarrett Rehbein, Toby White, Maura White, Chrisann McCarthy, Kevin McCarthy, Nathan VonDerVellen, Jochen Salfeld, Ben Salfeld, Melissa Sullivan, Emily Morgan, Sam Lehman, Mary Kate Lehman, Rachel Lehman, Andrea Lehman, Julia Bigwood, Pastor Jeff



Camp Calumet Registrations

Now is the time to register for a week or two of summer camp at Camp Calumet Lutheran in West Ossipee, New Hampshire. Registration forms are available from

Calumet's website at www.calumet.org. Don't miss out on this wonderful opportunity for ages 8 - 18. Prime weeks usually fill up by January! GSLC will be continuing its campership program. **LET US KNOW IF YOU'RE SIGNING UP.**

CAMPERSHIP FUND UPDATE

Thank you to all who helped support this year's Sunday School Table at the TAGS Yard Sale. We raised \$200.00. Our bus for the Sunday School Retreat at Calumet in April is partially funded through this event and our cinnamon bun sales in January and March.



Thank you so much.

Worship Support Training

Take time this month to discuss worship support with your family. Help is needed from everyone - children, youth and adults.



Register with the office to serve as

- an acolyte
- a crucifer
- a communion presenter
- a lector
- an usher
- a worship assistant

Training for acolytes and crucifers will be held on December 11th at noon. Other training sessions are to-be-announced.



EAT TO BENEFIT THE CAMPERSHIP FUND

On Thursday, November 17th UNO CHICAGO Grill, at 225 Turnpike Road in Westborough,

will donate up to 20% of your check to the GSLC Campership Fund. Please look on the table outside the window to Mrs. Gillam's office for one of these slips and enjoy a lunch or dinner at UNO on November 18th!

REPORT FROM THE TREASURER – As of September 30, 2011

September was a very good month financially speaking. The summary table below is a snapshot of our financial picture as of September 30, 2011.

	Year To Date	Current Month
Operating Revenue	\$389,116	\$ 50,460
Investment Income (loss)	(4,912)	(4,383)
Total Operating Revenue	A 384,204	46,077
Operating Expenses	B 378,080	44,926
Net Operating Income/Deficit	A-B \$ 6,125	\$ 1,152
Designated Revenue	\$ 33,109	\$ 3,294
Designated Expense	\$ 33,109	\$ 3,294

Our operating revenue was very high for the month (highest point all year), however our expenses also continued the upward trend. The net result was that our operating revenue exceeded our expenses for the month by \$5.5 thousand. Offsetting this positive result were investment losses during the month of \$4.4 thousand due to the stock market volatility.

Important highlights for the month are as follows:

- Operating Revenue was \$6,407 higher than budget for the month
- Operating Expenses were \$870 higher than budget
- We also had investment losses for the month of \$(4,383).

On a year to date basis, we are still favorable compared to last year and to budget. Our Operating Revenue, excluding investment earnings, for the year through September 2011 was \$389,116, which is \$13,536 higher than 2010. In addition, our Operating Expenses are significantly lower than last year, at \$378,080 compared to \$395,422 in 2010. The investment losses in 2011 of \$(4,912) were considerably worse than 2010 investment income of \$2,444. The net result is that in 2011 we have net operating income of \$6,125 this year compared to a loss of \$17,397 as of September 2010.

Notes on the year to date comparison to budget are included below.

The comparison of actual to budget is as follows:

	Jan - Sep 11	Budget	\$ Over Budget
Ordinary Income/Expense			
Income			
Total Operating Revenue	389,116.28	405,077.47	-15,961.19
Total Designated Revenue	33,108.93	0.00	33,108.93
Total Investment Income	-4,912.13	0.00	-4,912.13
Total Income	417,313.08	405,077.47	12,235.61
Expense			
Total Church Staff	91,633.86	98,253.00	-6,619.14
Total Property	89,648.59	98,510.00	-8,861.41
Total Senior Pastor	82,704.37	87,039.00	-4,334.63
Total Associate Pastor	48,749.50	56,070.00	-7,320.50
Total Missions	36,450.00	38,050.00	-1,600.00
Total Restricted Funds - Reserve	33,108.93		33,108.93
Total Church Office	13,813.36	12,438.00	1,375.36
Total Learning	5,805.46	5,787.00	18.46
Total Worship	5,369.46	4,899.50	469.96
Total Cong Life	2,270.99	1,035.00	1,235.99
Connections	693.51	828.00	-134.49
Total Health Ministry & Parish Nurse	672.10	1,260.00	-587.90
Stewardship	172.50	270.00	-97.50
Community Bridge	96.00	378.00	-282.00
Service	0.00	279.00	-279.00
Reconciliation Discrepancies	-0.10		
Total Expense	411,188.53	405,096.50	6,092.03
Net Ordinary Income	6,124.55	-19.03	6,143.58

Notes:

- Savings of \$10,409 YTD from mortgage refinancing
- Other Property overages of \$1,548 due to plowing and maintenance
- Compensation savings of \$18,274 YTD from replacement of Claire with Bess (10,356), lower payroll taxes (\$1,401), as well as savings from both Pastor's health insurance, auto, professional, and continuing education (\$6,516)
- Missions savings of \$1,600 due to timing- have not paid assistance to churches (\$900), AVPCC (\$500), and Calumet (\$200)
- Church office overage of \$1,375 due to overages on offices supplies (\$631), telephone charges (\$479), and postage (\$311)
- Congregation Life/Fellowship overage of \$1,236 is offset by receipts from bagels of \$1,849 (included in Operating Revenue)
- The comparison to prior year is as follows:

	<u>Jan - Sep 11</u>	<u>Jan - Sep 10</u>	<u>\$ Change</u>	<u>% Change</u>
Ordinary Income/Expense				
Income				
Total Operating Revenue	389,116.28	375,580.76	13,535.52	3.6%
Total Designated Revenue	33,108.93	41,380.89	-8,271.96	-19.99%
Total Investment Income	-4,912.13	2,444.11	-7,356.24	-300.98%
Total Income	417,313.08	419,405.76	-2,092.68	-0.5%
Expense				
Total Health Ministry & Parish Nurse	672.10	214.89	457.21	212.77%
Community Bridge	96.00	0.00	96.00	100.0%
Reconciliation Discrepancies	-0.10	192.24	-192.34	-100.05%
Total Restricted Funds - Reserve	33,108.93	41,380.89	-8,271.96	-19.99%
Total Missions	36,450.00	35,150.00	1,300.00	3.7%
Total Worship	5,369.46	4,818.15	551.31	11.44%
Total Learning	5,805.46	5,494.61	310.85	5.66%
Total Cong Life	2,270.99	4,199.76	-1,928.77	-45.93%
Stewardship	172.50	245.25	-72.75	-29.66%
Connections	693.51	508.80	184.71	36.3%
Total Church Office	13,813.36	13,737.74	75.62	0.55%
Total Property	89,648.59	102,417.77	-12,769.18	-12.47%
Total Senior Pastor	82,704.37	80,837.71	1,866.66	2.31%
Total Associate Pastor	48,749.50	46,827.84	1,921.66	4.1%
Total Church Staff	91,633.86	100,777.09	-9,143.23	-9.07%
Total Expense	411,188.53	436,802.74	-25,614.21	-5.86%
Net Ordinary Income	6,124.55	-17,396.98	23,521.53	-135.21%
Operating Revenue before NII	389,116.28	375,580.76	13,535.52	3.6%
Operating Expenses	378,079.60	395,421.85	-17,342.25	-4.39%
Operating Income before NII	11,036.68	-19,841.09	30,877.77	-155.63%
Net Investment Income	-4,912.13	2,444.11	-7,356.24	-300.98%
Net Ordinary Income	6,124.55	-17,396.98	23,521.53	-135.21%

Happy Birthday

Nov. 2	Troy Morkert	Nov. 14	Mike Mathieu
Nov. 3	Mark Booher	Nov. 16 -	Sherri Girouard
Nov. 4	Cora Matthews		Diana Tarnow
Nov. 5	Mia Kelley-Lanser		Jim Sullivan
Nov. 6	Tyler Olson		Sherri Piuze
	Claire Paquette	Nov. 17	Alli Leclair
Nov. 7	Alex Albers		Christine Lentz
	Celeste Laak		Shelby Sheridan
Nov. 8	David DeMattia	Nov. 18	Christine Breecher
	Art Gillam	Nov. 19	Dara Ricci
Nov. 9	Rachel Diebold	Nov. 20	Richard Allison
	Deb LeCrone		Mikayla LaFleur
	Merin Rhodes		Bernd Mieth
Nov. 10	Darla Allison	Nov. 21	Zac Piuze
	Regan Casey	Nov. 24	Harrison Gehlbach
	Joan Creekmore	Nov. 26	Michael McDonnell
Nov. 11	William Olson	Nov. 28 -	Kent Arnold
	Bruce Roseen		Julia Bigwood
Nov. 12	Henry Tiedemann	Nov. 30 -	Michael Lentz
Nov. 13 -	Pat Olson		

**If we missed your birthday or anyone you know,
please notify the office at 508 366-7095 so we can update our records.**

Good Shepherd Lutheran Church Christmas Pageant 2011 Sign-Up

Our Annual Christmas Pageant will be held on Sunday, December 11th at 10:15 a.m.



The Advent Tree

Everyone is invited to participate at their own personal comfort level. Complete **both sections** below and return this sign-up form to church.

This year's pageant is adapted from Contemporary Drama Service's program "The Advent Tree."

Necessary deadlines, as the script is being adapted for an exact number of participants, are:

November 13th for any speaking and/or solo part *** **November 27th** for all other parts. **Thank you.**

Acting Participation includes:

please check **ONE** choice

- | | |
|---|--|
| <p>_____ Acting Group A: Speaking Parts –
Some at-home memorization required. Designed for Grades 2 - 8
with two <u>mandatory</u> Saturday rehearsals:</p> | <p>Nativity Characters
12/3 & 12/10
10 am - Noon</p> |
| <p>_____ Acting Group B: Reader Parts –
Readers and Worship Leaders
Open to all with two Saturday rehearsals</p> | <p>no memorization
12/3 and 12/10
10 am - Noon</p> |
| <p>_____ Acting Group C: Non-Speaking Parts – Angels, Shepherds, Animals, SS Children
Open to all with one Saturday rehearsal</p> | <p>Circle choice of costume above
12/10
10 am - Noon</p> |
| <p>_____ Technical Crew</p> | <p>_____ No Interest</p> |



Musical/Talent Participation includes: please check **ALL** choices that apply

- _____ Vocal Solos and/or Duets
- _____ General Singing with Children's Sunday School Singers - all
- _____ Group Singing with Good News Choir – grades 1-6
- _____ Ringing with Allegro Handchimes – grades 4-8
- _____ Group Singing with MidWeek Singers – grades 5-8
- _____ Instrumental music provided for Prelude, Offertory or Postlude
or accompanying songs. Instrument _____
- _____ Flute Choir
- _____ No Interest



Child's Name _____ Gr/Age _____

Child's Name _____ Gr/Age _____

Child's Name _____ Gr/Age _____

SEE BACK FOR ADULT VOLUNTEER OPPORTUNITIES

ADULT VOLUNTEER OPPORTUNTIES

Saturday, December 10, 2011

10 am to Noon

_____ **COSTUME HELP** **AM** **DOWNSTAIRS FELLOWSHIP HALL**

Name _____ email _____

Telephone _____

_____ **GROUP SUPPORT** **VOLUNTEER NEEDED FOR EACH SUNDAY SCHOOL CLASS**

Name _____ email _____

Telephone _____

3:30 to 5 pm

_____ **PAGEANT BRUNCH SET-UP**

Name _____ email _____

Telephone _____

****WESTBOROUGH ECUMENICAL VBS PRESENTS****

CHRISTMAS SCHOOL

For PreSchoolers

and their Parents, Grands, Nannies and Siblings

Tuesday, December 6
Wednesday, December 7
Thursday, December 8
9:15 a.m. – 10:45 a.m.



Day 1 The Birth of Jesus

Day 2 Finding Jesus

Day 3 Gifts for Jesus

Music * Storytelling * Game * Snack * Craft
Visits with an Angel, Shepherd and Wiseman

To Reserve a Spot: call (508.366.7095) , email (office@gs-lc.org) or send a note to Good Shepherd. Include PreSchooler's name, age and which days attending. Also include how many will be accompanying the child.

Freewill donation to cover supplies suggested at \$20 per child / \$30 family maximum.

Good Shepherd Lutheran Church

183 West Main Street, Westborough, MA 01581

Tel.

508-366-7095

Email

office@gs-lc.org

Good Shepherd Lutheran Church						November 2011
Sun	Mon	Tues	Wed	Thurs	Fri	Sat
Super Wednesdays - Begins 5 ³⁰ Supper (FH) 6 MidWeek Singers 6 ³⁰ -8 Study MidWeek (DFH) Confirm. (L & CRs) 6 ³⁰ -7 ¹⁵ Discussion for Adult (KOB) 7 ³⁰ MidWeek Worship Service (FH)	Regular Schedule 7 ⁴⁵ & 9 Traditional 10 ⁴⁵ Contemporary 9 & 10 ³⁰ Sunday School 3yr.-8th Gr. 10-10 ⁴⁵ TAGS (DFH) 9 & 10 ⁴⁵ Adult Forum (KOB) 9 to Noon Coffee & Bagels (FH) 9 ³⁰ New Direction Rehearsal (MR) 10-10 ³⁰ Children's Music Rehearsals 10 ³⁰ Choir Rehearsal (MR)	1 8 am – ND Band Leadership Meeting All Saint's Day 10 ³⁰ WHC 11 ³⁰ Staff Meeting (FH) 12-1 AA (DFH) 3 ³⁰ -6 D Bennett Music (MR) 6 M. Reiman (N) 7 Connections	2 9 ¹⁵ Early Intervention (N & FH) 3 ³⁰ -8 D Bennett Music (MR) 6-7 K Arnold Music (CR) Super Wednesdays 7 Adult Class (KOB)	3 9 ¹⁵ Early Intervention (N & FH) 12 Interfaith Clergy Lunch 3 ³⁰ -5 Brownie 11032 Steuhmer (DFH) 5 Dinnerbelles 6 Bell Choir (BL) 7 ³⁰ Learning (CED) 7 ³⁰ Worship & Music (KOB) 7 Troop 4 (DFH) 7 ³⁰ New Direction 8 AA (FH)	4 9 ³⁰ Friday Group 12-1 AA (DFH) 2 ³⁰ -4 ³⁰ GS Troop 30507 Baldwin (DFH) 6 Craft & Movie Night (5 th – 12 th Grade)	5 7 AA (FH)
ALL SAINTS SUNDAY Regular Schedule Gospel Ringers (9am) Daylight Savings Time (-1) NEW MEMBERS RECEIVED 2 ³⁰ Beaumont 4 Troop 4 Patrol Leaders (DFH) 6 ³⁰ -8 ³⁰ Girl Scouts 30635 Baldwin (DFH) 7 ³⁰ AA (FH)	9 Monday Morning Bible Study (KOB) 12 – 1 AA (DFH) 12 – 1 ³⁰ EI Music Group (Nursery & FH) 3 ³⁰ -6 D Bennett Music (MR) 6 Pack 4 Tiger Den TBD (DFH) 7 Pack 4 Weblos II Dalal (DFH)	12-1 AA (DFH) 12 OWLs Luncheon (FH) 6 M. Reiman (N) 7 Council 7 Troop 4 Adult Committee meetings (DFH)	9 ¹⁵ EI (N & FH) 10 Staff Meeting 6-7 K Arnold Music (CR) Super Wednesdays 7 Adult Class (KOB)	9 ¹⁵ EI (N & FH) 11 ³⁰ Staff Meeting (FH) 3 ³⁰ -5 Daisy TBD Steuhmer (DFH) 5 Dinnerbelles 6 Bell Choir (BL) 7 Health Ministry (KOB) 7 Troop 4 (DFH) 7 ³⁰ New Direction 8 AA (FH)	Veteran's Day No School 9 ³⁰ Friday Group 12-1 AA (DFH) 3 ³⁰ -8 D Bennett Music (MR)	8-10 am Safe Church Training (Outside Organizations) 11-1 Safe Church Training (Congregation members) 7 AA (FH)
Regular Schedule 22nd Sunday after Pentecost Children in Church – NO Sunday School 12-2 Safe Church Training (Congregation members) 4-6 National Youth Gathering - planning meeting 4 Brownie Troop 30124 (FH) 6 ³⁰ -8 ³⁰ Girl Scouts 30635 Baldwin (DFH) 7 ³⁰ AA (FH)	December Messenger Deadline 9 Monday Morning Bible Study (KOB) 12 – 1 AA (DFH) 12 – 1 ³⁰ EI Music Group (Nursery & FH) 3 ³⁰ -6 D Bennett Music (MR) 4 ¹⁵ – 6 GS Troop 30597 Clarke (DFH) 6 Pack 4 Bear Chan (DFH) 7 Pack 4 Wolf Miccuci (DFH) 7 – 9 Safe Church Training (Outside Organizations)	12-1 AA (DFH) 6 M. Reiman (N) 7 Property 7 Service	9 ¹⁵ EI (N & FH) 6-7 K Arnold Music (CR) Super Wednesdays	9 ¹⁵ EI (N & FH) 11 ³⁰ Staff Meeting (FH) 3 ³⁰ -5 Brownie 11130 Scerbin (DFH) 5 Dinnerbelles 6 Bell Choir (BL) 7 Prayer Shawl (KOB) 7 Troop 4 (DFH) 7 ³⁰ New Direction 8 AA (FH)	9 ³⁰ Friday Group 12-1 AA (DFH) 2 ³⁰ -4 ³⁰ GS Troop 30507 Baldwin (DFH) 3 ³⁰ -8 D Bennett Music (MR)	7 AA (FH)
CHRIST THE KING Regular Schedule Midweek Singers 11⁴⁵ Congregation Meeting 10 Blood Pressure Screening (Rm 3) 4 Troop 4 Patrol Leaders (DFH) 6 ³⁰ -8 ³⁰ Girl Scouts 30635 Baldwin (DFH) 7 ³⁰ AA (FH)	9 Monday Morning Bible Study (KOB) 12 – 1 AA (DFH) 12 – 1 ³⁰ EI Music Group (Nursery & FH) 3 ³⁰ -6 D Bennett Music (MR)	12-1 AA (DFH) 11 ³⁰ Staff Meeting (FH) 6 M. Reiman (N) 7 ³⁰ Take a Breath Women's Group (TBD)	No Super Wednesdays 9 ¹⁵ EI (N & FH) 7 ³⁰ Interfaith Thanksgiving Service (TBD)	Thanksgiving Day Office Closed 12 Noon Senior Thanksgiving Dinner (Knights of Columbus Westborough)	Office Closed 3 ³⁰ -8 D Bennett Music (MR)	7 AA (FH)
TAGS REUNION SUNDAY & BRUNCH (FH) Regular Schedule 1st Sunday in Advent Advent Wreath Workshop (DFH) 4 Brownie Troop 30124 (FH) 7 ³⁰ AA (FH)	9 Monday Morning Bible Study (KOB) 12 – 1 AA (DFH) 12 – 1 ³⁰ EI Music Group (Nursery & FH) 3 ³⁰ -6 D Bennett Music (MR) 4 ¹⁵ – 6 GS Troop 30597 Clarke (DFH) 7 Pack 4 Meeting Krugman (DFH)	12-1 AA (DFH) 11 ³⁰ Staff Meeting (FH) 6 M. Reiman (N)	9 ¹⁵ EI (N & FH) 6-7 K Arnold Music (CR) Super Wednesdays			

Good Shepherd Lutheran Church						December 2011
Sun	Mon	Tues	Wed	Thurs	Fri	Sat
Special Advent & Christmas Sunday Services 12/11, 12/18, 12/25, 1/1 8 ³⁰ Traditional 10 ¹⁵ Contemporary		Super Wednesdays - Begins 5 ³⁰ Supper (FH) 6 MidWeek Singers 6 ³⁰ -8 Study MidWeek (DFH) Confirm. (L & CRs) 6 ³⁰ -7 ¹⁵ Discussion for Adult (KOB) 7 ³⁰ MidWeek Worship Service (FH)	KEY BL = Bell Loft CED = Christian Ed Office CR # = Classroom # DFH = Downstairs Fellowship Hall FH = Fellowship Hall KOB = Library L = Lounge MR = Music room N = Nursery NO = Nurse's Office S = Sanctuary	1 9 ¹⁵ Early Intervention (N & FH) 12 Interfaith Clergy Lunch 3 ³⁰ -5 Daisy TBD Steuhmer (DFH) 5 Dinnerbelles 6 Bell Choir (BL) 7 ³⁰ Learning (CED) 7 ³⁰ Worship & Music (KOB) 7 Troop 4 (DFH) 7 ³⁰ New Direction 8 AA (FH)	2 9 ³⁰ Friday Group 12-1 AA (DFH) 2 ³⁰ -4 ³⁰ GS Troop 30507 Baldwin (DFH) 3 ³⁰ -8 D Bennett Music (MR)	3 10-12 Fellowship Breakfast Connections and Health (FH) 10 - Noon Pageant Rehearsal I (S) 7 AA (FH)
4	5	6	7	8	9	10
2nd Sunday in Advent Regular Service Gospel Ringers (9am) Advent Lessons & Carols Poinsettia Deadline 4 Troop 4 Patrol Leaders (DFH) 6 ³⁰ -8 ³⁰ Girl Scouts 30635 Baldwin (DFH) 7 ³⁰ AA (FH)	9 Monday Morning Bible Study (KOB) 12 - 1 AA (DFH) 12 - 1 ³⁰ EI Music Group (Nursery & FH) 3 ³⁰ -6 D Bennett Music (MR) 6 Pack 4 Tiger Den TBD (DFH) 7 Pack 4 Weblos II Dalal (DFH)	8 am - ND Band Leadership Meeting 9-11 AM CHRISTMAS SCHOOL 6-7 K Arnold Music (CR) Super Wednesdays 12-1 AA (DFH) 6 M. Reiman (N)	9-11 AM CHRISTMAS SCHOOL 6-7 K Arnold Music (CR) Super Wednesdays	9-11 AM CHRISTMAS SCHOOL 11 ³⁰ Staff Meeting 3 ³⁰ -5 Brownie 11130 Scerbin (DFH) 5 Dinnerbelles 6 Bell Choir (BL) 7 Health Ministry (KOB) 7 Troop 4 (DFH) 7 ³⁰ New Direction 8 AA (FH)	9 ³⁰ Friday Group 12-1 AA (DFH) 2 ³⁰ -4 ³⁰ GS Troop 30507 Baldwin (DFH) 3 ³⁰ -8 D Bennett Music (MR) 6 TAGS Christmas Party (TBD)	10 - Noon Pageant Rehearsal II (S) Noon Acolyte Training (S) Christmas Fair Fundraiser/Chocolate Sale (TBD) 7 AA (FH)
11	12	13	14	15	16	17
PAGEANT & BRUNCH 3rd Sunday in Advent Children in Church - NO Sunday School Special Services 8³⁰ Traditional 10¹⁵ Sunday School Pageant 2 ³⁰ Beaumont 4 Brownie Troop 30124 (FH) 6 ³⁰ -8 ³⁰ Girl Scouts 30635 Baldwin (DFH) 7 ³⁰ AA (FH)	January Messenger Deadline 9 Monday Morning Bible Study (KOB) 12 - 1 AA (DFH) 12 - 1 ³⁰ EI Music Group (Nursery & FH) 3 ³⁰ -6 D Bennett Music (MR) 4 ¹⁵ -6 GS Troop 30597 Clarke (DFH) 6 Pack 4 Bear Chan (DFH) 7 Pack 4 Wolf Miccuci (DFH)	12 - 1 OWLS Luncheon and party 12-1 AA (DFH) 6 M. Reiman (N) 7 Council 7 Troop 4 Adult Committee meetings (DFH)	9 ¹⁵ EI (N & FH) 10 Staff Meeting 6-7 K Arnold Music (CR) Super Wednesdays	9 ¹⁵ EI (N & FH) 11 ³⁰ Staff Meeting 5 Dinnerbelles 3 ³⁰ -5 Brownie 11032 Steuhmer (DFH) 6 Bell Choir (BL) 7 Troop 4 (DFH) 7 ³⁰ New Direction 8 AA (FH)	All Bulletins Done & Printed by Today for Christmas Services 9 ³⁰ Friday Group 12-1 AA (DFH) 2 ³⁰ -4 ³⁰ GS Troop 30507 Baldwin (DFH) 3 ³⁰ -8 D Bennett Music (MR)	10 Choir Rehearsal (S) 7 AA (FH)
18	19	20	21	22	23	24
Special Services 4th Sunday in Advent Midweek Singers and Dads (9am) Children in Church - NO Sunday School Confirmands Serve in Worship 10 Blood Pressure Screening (Rm 3) 4 Brownie Troop 30124 (FH) 4 Troop 4 Patrol Leaders (DFH) 5 Blue Christmas (S) 6 ³⁰ -8 ³⁰ Girl Scouts 30635 Baldwin (DFH) 7 ³⁰ AA (FH)	9 Monday Morning Bible Study (KOB) 12 - 1 AA (DFH) 12 - 1 ³⁰ EI Music Group (Nursery & FH) 3 ³⁰ -6 D Bennett Music (MR) 7 Pack 4 Meeting Krugman (DFH)	12-1 AA (DFH) 6 M. Reiman (N) 7 Property 7 Service	No Super Wednesdays 9 ¹⁵ EI (N & FH) 4 Staff Christmas Party 6-7 K Arnold Music (CR)	9 ¹⁵ EI (N & FH) 11 ³⁰ Staff Meeting 3 ³⁰ -5 Daisy TBD Steuhmer (DFH) 5 Dinnerbelles 6 Bell Choir (BL) 7 Troop 4 (DFH) 7 ³⁰ New Direction 8 AA (FH)	9 ³⁰ Friday Group 12-1 AA (DFH) 3 ³⁰ -8 D Bennett Music (MR)	Christmas Eve 5 Children's Service Children Instrumentalists 7 Traditional 11 Festival Service Gospel Ringers
25	26	27	28	29	30	31
CHRISTMAS DAY Special 10¹⁵ Christmas Service Children in Church - NO Sunday School 7 ³⁰ AA (FH)	Office Closed 12 - 1 AA (DFH)	Office Closed 12-1 AA (DFH) 6 M. Reiman (N)	9 ¹⁵ EI (N & FH) 6-7 K Arnold Music (CR)	9 ¹⁵ EI (N & FH) 3 ³⁰ -5 Brownie 11130 Scerbin (DFH) 7 Troop 4 (DFH) 7 ³⁰ New Direction 8 AA (FH)	9 ³⁰ Friday Group 12-1 AA (DFH) 3 ³⁰ -8 D Bennett Music (MR)	New Year's Eve

YEAR-AT-A-GLANCE 2011/2012

AUGUST		JANUARY	
22	Pastor Baines Returns from Sabbatical	1	Worship Service 10 ¹⁵ & Children in Church
28	Blessing of the Backpacks - Sunday School Registration	4	Super Wednesdays Resumes
SEPTEMBER			5 ³⁰ Dinner
3-5	Labor Day Weekend		6 ⁰⁰ MidWeek Singers
4	Sunday School Registration		6 ³⁰ MidWeek, Confirmation & Adult Classes
7	6 – 7 p Prayer Vigil		7 ³⁰ MidWeek Worship Service (FH)
9-11	TAGS at Hammonasset	6	Epiphany Celebration
10	SS Teachers Mtg 12 ³⁰ p	8	Return to Regular Schedule – Remembrance of Baptism Service
11	Sunday School Rally Day & Affirmation & Picnic Return to Regular Schedule: 7 ⁴⁵ , 9, 10 ⁴⁵ am		1 st Communion Classes Start
14	Super Wednesdays Begins	11	Prayer Vigil 1 – 3 p
	5 ³⁰ Dinner	14-16	Super Wednesdays 5 ³⁰ - 8p
	6 ⁰⁰ MidWeek Singers	19	MLK Jr. Weekend
	6 ³⁰ MidWeek, Confirmation & Adult Classes	22	Super Wednesdays 5 ³⁰ - 8p
	7 ³⁰ MidWeek Worship Service (FH)	25	Friendship Sunday
18	Confirmation Blessing	25	Super Wednesdays 5 ³⁰ - 8p
	New Member Classes Begin	29	Pizza Supper & Silent Auction 5p – Talent Show 6p
21	Super Wednesdays 5 ³⁰ - 8p	FEBRUARY	
23-25	Congregation on Retreat at Calumet	1	Super Wednesdays 5 ³⁰ - 8p
28	Super Wednesdays 5 ³⁰ - 8p	5	Pastor's 1st Communion Class with Parent
30	TAGS Yard Sale & Pizza & Pricing	5	Congregation Meeting 11 ⁴⁵
OCTOBER		8	Super Wednesdays 5 ³⁰ - 8p
1	TAGS Yard Sale & Recycle Day	12	Confirmands Serve in Worship & Cinnamon Bun Sale I for Camperships
5	Super Wednesdays 5 ³⁰ - 8p	19	Children in Church (no regular Sunday School)
8	Blessing of the Animals 11 am	21	Mardi Gras Pancake Supper 6p
8-10	Columbus Day Weekend	22	Lenten Soup Supper I – 5 ³⁰ – 7 p
12	Super Wednesdays 5 ³⁰ - 8p		Ash Wednesday Services 12 ¹⁵ & 7 p
16	Crop Walk 12 ³⁰ p – Women of Note Concert 7p	26	Ash Wednesday Soup Luncheon 1 p
19	Super Wednesdays 5 ³⁰ - 8p		New Member Classes Begin
22-23	Safe Church Training New and 3-Year Review	MARCH	
26	Super Wednesdays 5 ³⁰ - 8p	4	1st Communion
30	Reformation & Commitment Sunday	7	Lenten Soup Supper II - 6 MidWeek Singers - 6 ³⁰ Classes -7 ³⁰ Lenten Svc.
	Confirmands Serve in Worship	10	Special Olympics 5 th – 12 th Grades
NOVEMBER		11	Daylight Savings Time (+1)
2	Super Wednesdays 5 ³⁰ - 8p	14	Lenten Soup Supper III - 6 MidWeek Singers - 6 ³⁰ Classes -7 ³⁰ Lenten Svc.
4	Craft & Movie Night – 5 th thru 12 th Grade	16-18	Confirmation Retreat to Calumet
6	Daylight Savings Ends(Fall Back -1)	21	Lenten Soup Supper IV - 6 MidWeek Singers - 6 ³⁰ Classes -7 ³⁰ Lenten Svc.
	All Saint's Sunday – New Mbrs Rec'd	25	Cinnamon Bun Sale II for Camperships
9	Super Wednesdays 5 ³⁰ - 8p	28	Lenten Soup Supper V - 6 MidWeek Singers - 6 ³⁰ Classes -7 ³⁰ Lenten Svc.
12	Blood Drive – 9-2	APRIL	
13	Children in Church (no regular Sunday School)	1	Palm Sunday
16	Super Wednesdays 5 ³⁰ - 8p	4	6 p Pasta Buffet & Way of the Cross
20	Congregation Meeting 11 ⁴⁵	5	12 Soup Lunch - 12 ³⁰ Table Eucharist
23	Interfaith Thanksgiving Service 7 ³⁰ pm – No Super Wednesdays		Soup Supper, Maundy Thursday Services 6 ³⁰ & 7 ⁴⁵ p
24	Thanksgiving – Sr. Dinner @ K of C Westborough	6	Good Friday 12 p and 7 p
27	1 st Sunday in Advent – TAGS Reunion & Brunch		3 – 7 p Prayer Vigil
	Advent Wreath Workshop	7	Easter Rehearsal for Choir & Brass 10 a stations of the resurrection
30	Super Wednesdays 5 ³⁰ - 8p		Stations of the Resurrection
DECEMBER		8	Easter Services: 7, 9, 11 am
3	Pageant Rehearsal I 10 to Noon	11	Last Super Wednesdays 5 ³⁰ - 8p 7 th Gr. Projects/6 th Gr. MidWeek Graduation
6-8	Christmas School 9 - 11a	16-20	April Vacation
7	Super Wednesdays 5 ³⁰ - 8p	25	Confirmation Grade 8 Only 6 ³⁰ p
10	Pageant Rehearsal II 10 to Noon	22	Christian Cabinet
	Acolyte Training Noon	27-29	Sunday School Retreat @ Calumet
11	Worship Services 8 ³⁰ & 10 ¹⁵	28	Earth Day Clean-up
	Pageant Sunday & Brunch 10 ¹⁵	29	Good Shepherd Sunday – Homecoming
14	Super Wednesdays 5 ³⁰ - 8p		April 29- Mays Rummage Sale Week
18	Worship Services 8 ³⁰ & 10 ¹⁵ & Children in Church	MAY	
	Blue Christmas 5p	2	Confirmation Grade 8 Only 6 ³⁰ p
24	Christmas Eve Services: 5, 7, 11 pm	4	Rummage Sale 6 – 8 p
25	Worship Service 10 ¹⁵	5	Rummage Sale 9 – 11 a TAGS Car Wash & Recycle Day
		6	Church Music Sunday - HOP-N-ING
		9	Confirmation Presents Faith Statements to Council
		13	Mother's Day
		16	Confirmation Grade 8 Only 6 ³⁰ p
		20	Confirmation
		26-28	Memorial Day Weekend - Change to Summer Schedule 8 ³⁰ & 10 ¹⁵
		27	Pentecost / Children in Church
		JUNE	
		10	Trinity Sunday & Children's Sunday
		17	Father's Day
		18	SS Teachers Mtg. and Supper 630p

WORSHIP SUPPORT	OCTOBER 30TH REFORMATION SUNDAY	NOVEMBER 6	NOVEMBER 13	NOVEMBER 20	NOVEMBER 27
ACOLYTE	7:45 Usher 9:00 Confirmand	7:45 Usher 9:00 Johanna Casey	7:45 Usher 9:00 Sam Anzede	7:45 Usher 9:00 Francesca Bianchi	7:45 Usher 9:00 Gavin McRae
CRUCIFER	7:45 Worship Assistant 9:00 Confirmand	7:45 Worship Assistant 9:00 Anne Arnold	7:45 Worship Assistant 9:00 Molly Travis	7:45 Worship Assistant 9:00 Melissa Sullivan	7:45 Worship Assistant 9:00 Ethan McRae
LECTOR	7:45 Marilyn Reiman 9:00 10:45	7:45 Robert Frederico 9:00 Alex Albers 10:45 Michael Mathieu	7:45 Gail Piuze 9:00 Pat Fontes 10:45 Audrea Lehman	7:45 Ned Rich 9:00 James Sullivan 10:45 Ken Calder	7:45 David Golden 9:00 Bruce Grams 10:45 Stephanie Leclair
WORSHIP ASSISTANT	7:45 Nicole Harvell 9:00 Caryn Francese 10:45 Confirmand	7:45 Jim Black 9:00 Darlene Zuehl 10:45 Paula Mathieu	7:45 Stan Corbett 9:00 Verle Zuehl 10:45 Yvonne Topping	7:45 Jochen Salfeld 9:00 Caryn Francese 10:45 Brenda Calder	7:45 Barbara Shumaker 9:00 Warren Hagenbuech 10:45 Stephanie Leclair
COMMUNION PRESENTERS	7:45 Carie & Stan Corbett 9:00 Confirmand	7:45 Robert Frederico Marilyn Reiman 9:00 David & Kristen McCordick	7:45 Ron & Gail Piuze 9:00 Robert & Linda Frederico	7:45 Bill & Elaine Rissmiller 9:00 Lisa Anzede & Kim Wezniak	7:45 Penny & Jim Black 9:00 Patti & Benet Bianchi
USHERS	7:45 Juliet & Richard Porter 9:00 Confirmand 10:45 Confirmand	7:45 Paul Bigwood & Stan Corbett 9:00 Darla & Rick Allison 10:45 Stephanie Leclair Chris Sulmasy	7:45 Janet & David Golden 9:00 Bert Barton & Don Wolf 10:45 George Grassey Peter Granick	7:45 Juliet & Richard Porter 9:00 Jim Sullivan & Mark VanOrden 10:45 Cathy & Jeff Sooy	7:45 Dick Bergemann & Jim Black 9:00 Need 10:45 Anne & Steve Changaris
GREETERS	7:45 Carie & Stan Corbett 9:00 Confirmand 10:45 Confirmand	7:45 Joe & Julie Billmaier 9:00 David & Kristen McCordick	7:45 Ron & Gail Piuze 9:00 Arthur & Nancy Matson	7:45 Bill & Elaine Rissmiller 9:00 Bonnie Sullivan & Donna VanOrden	7:45 Penny Black & Ellen Cloutier 9:00 Patti & Benet Bianchi
ALTER CARE	Katie Zimmermann Alex Albers	Joan Olson & Jeanne Smith	Christiane Merrow & Trudy Roybal	Elaine Martin & Stephanie Leclair	Diana Barton & Darla Allison

WORSHIP SUPPORT	DECEMBER 4	DECEMBER 11 Christmas Pageant	DECEMBER 18	DECEMBER 24	DECEMBER 25
ACOLYTE	7:45 Usher 9:00 Abbey Kelley-Lanser	8:30 Justin Rea	8:30 Need	5 PM Johanna Casey 7 PM MaryKate Lehman 11 PM Need	10:15 Need
CRUCIFER	7:45 Worship Assistant 9:00 Sara Travis	8:30 Luke Rutledge	8:30 Annalise Lowy	5 PM Melissa Sullivan 7 PM Anne Arnold 11 PM Need	10:15 Need
BOOK BEARER & TORCH BEARERS				7 PM Sam Lehman (BB) Emily & John Arnold(TB) 11 PM Need (BB) Kay Albers & Ben Zimmerman (TB)	n/a
LECTOR	7:45 Daniel Schur 9:00 Diana Barton 10:45 Scott Lehman	8:30 Marilyn Reiman	8:30 Robert Frederico 10:15 Audrea Lehman	5:00 PM Children of the Congregation 7:00PM Gail Piuze 11:00PM Alex Albers	10:15 Marilyn Reiman
WORSHIP ASSISTANT	7:45 Jim Black 9:00 Al Graefing 10:45 Nicole Harvell	8:30 Jochen Salfeld	8:30 Stan Corbett 10:45 Deborah Harvell	5 PM Need 7 PM Joan Dickert 11 PM Linda Wilson	10:15 Caryn Francese
COMMUNION PRESENTERS	7:45 Christiane Merrow Greta Magenis 9:00 Sarah & Brad McRae	8:30 Bill & Elaine Rissmiller	8:30 Janet & David Golden	5 PM David & Nancy Cooper 7 PM Lisa Anzede & Kim Wezniak 11 PM Arthur & Amy Gillam	10:15 Joe & Julie Billmaier
USHERS	7:45 Celeste & Ned Rich 9:00 Bert Barton & Don Wolf 10:45 Stephanie Leclair Chris Sulmasy	8:30 Paul Bigwood & Stan Corbett 10:15 George Grasse Peter Granick	8:30 Juliet & Richard Porter 10:15 Cathy & Jeff Sooy	5 PM Peter Granick Claudia Ramirez 7 PM Need 11 PM Stephanie Leclair & Need	10:15 Need
GREETERS	7:45 Christiane Merrow Greta Magenis 9:00 Brad McRae	8:30 Eleanor Bigwood & Albert Convery	8:30 Need	5 PM Caryn Francese & Dominic & Michael Hanna 7 PM Need 11 PM Stephanie Leclair & Need	10:15 Need
ALTAR CARE	Katie Zimmermann & Alex Albers	Elaine Martin & Stephanie Leclair	Christiane Merrow & Trudy Roybal	Joan Olson & Jeanne Smith	Diana Barton & Darla Allison

†Good Shepherd†

Office: 508.366.7095
Fax: 508.366.3879
Email: office@gs-lc.org

Web Page & Devotional E-ministry
www.gs-lc.org

The Rev. Dr. Kathryn B. Baines
Senior Pastor

ext. 2 pastor@gs-lc.org

The Rev. Jeffrey Goodrich
Associate Pastor

ext. 3 pastorjeff@gs-lc.org

Parish Secretary: ext. 5
Caryn Francese secretary@gs-lc.org

Music Director: ext. 6
Bess Sproul music@gs-lc.org

Christian Education Director: ext. 7
Suzanne Gillam education@gs-lc.org

Information Technology ext. 4
Tom Olson tom@gs-lc.org

Financial Services: ext. 4
David McCordick finsec@gs-lc.org

Parish Nurse:
Kristen McCordick nurse@gs-lc.org

Community Bridge Builder:
Yvonne Topping topping@gs-lc.org

Custodian:
David Golden

The Rev. Dr. Kathryn B Baines
Senior Pastor

86 Ruggles Street Westborough, MA 01581

Home: 508-898-0492
Cell: 508-320-6020
Email: pastor@gs-lc.org

The Rev. Jeffrey Goodrich
Associate Pastor

Home: 978-254-5272
Cell: 508-808-1795
Email: pastorjeff@gs-lc.org

Kristen McCordick RN, BSN

Parish Nurse

Reachable Daily

Home: 508-836-4306
Email: nurse@gs-lc.org

See us on line at: www.gs-lc.org

On facebook



Search for Good Shepherd or
gslcprb (Pastor Baines)
[gslcpastorjeff](#) (Pastor Jeff) on
Twitter

facebook



Name:
Good Shepherd
Lutheran Church of
Westborough,
Massachusetts

NOTARY PUBLIC SERVICES



Caryn H. Francese,
Notary Public

I will be offering these services at no cost to the congregants of Good Shepherd. Please call before you come and note that I will not be available to notarize the 1st

Tuesday of the month or Thursdays between 11:30 and 2:30.